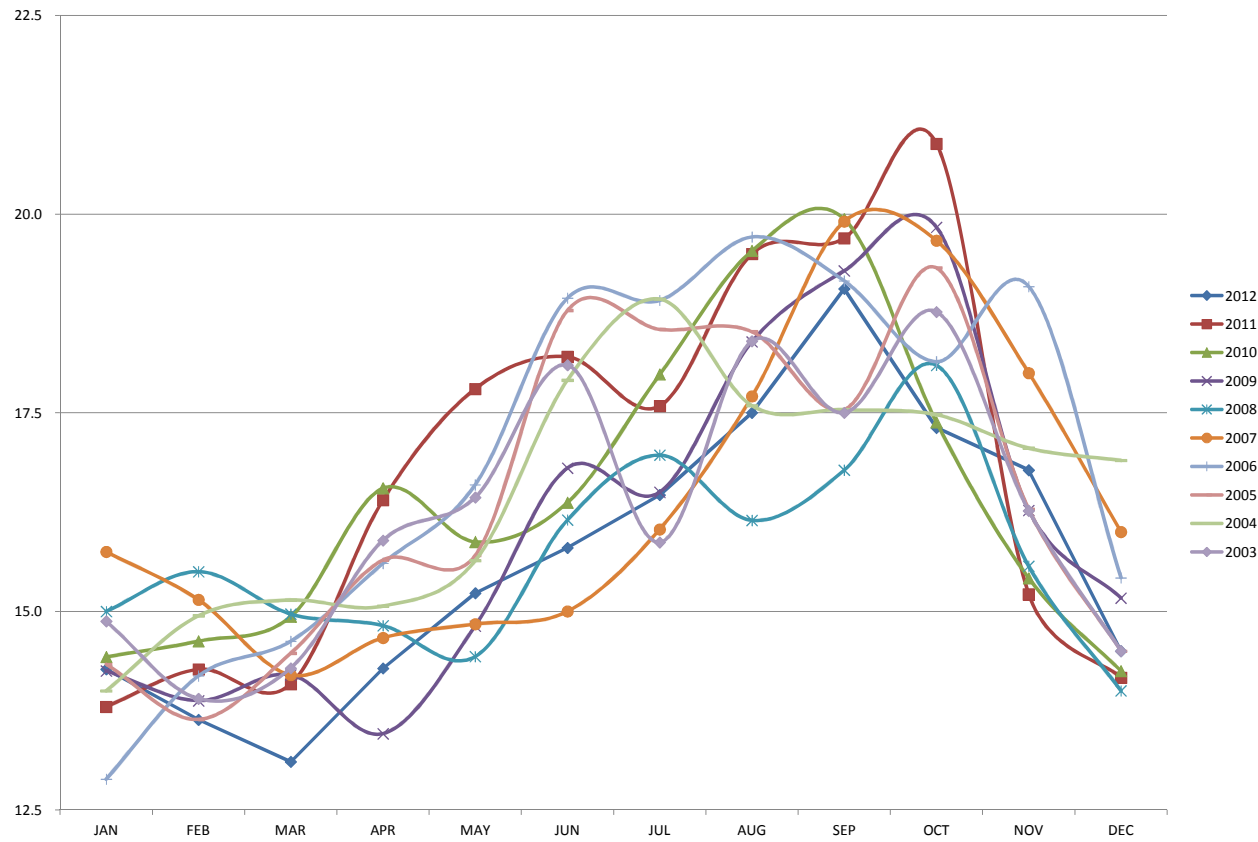


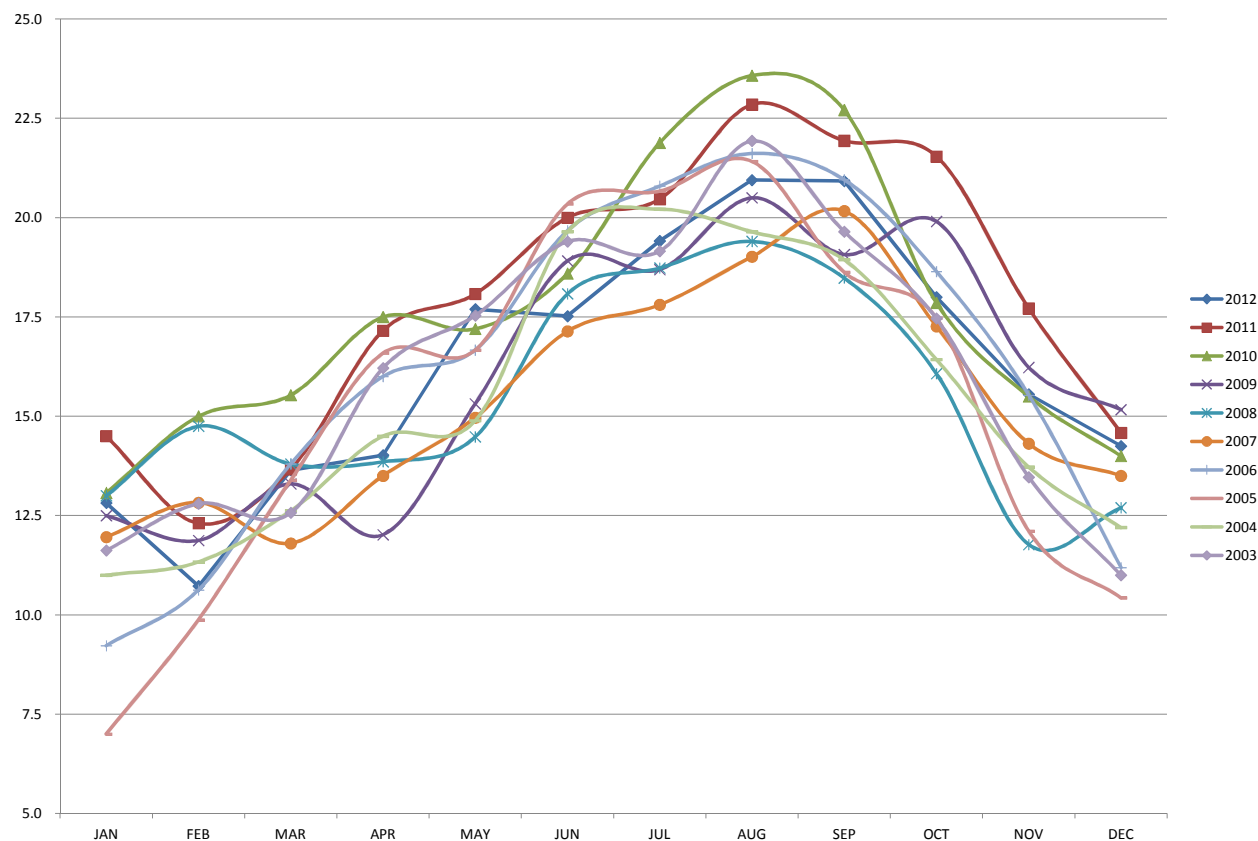
## OCEANIC CONDITIONS SUMMARY

Followings are the data of the fixed point observation at our set net (two and a half nautical miles away from the coast line of Algarve, Portugal) Since 1995 we have been trying to collect the data as many as possible. This is the fruit of the daily fishermen's efforts.

### WATER TEMPERATURE (BOTTOM)



### AIR TEMPERATURE



## OCEANIC CONDITIONS SUMMARY

Followings are the data of the fixed point observation at our set net (two and a half nautical miles away from the coast line of Algarve, Portugal)  
Since 1995 we have been trying to collect the data as many as possible. This is the fruit of the daily fishermen's efforts.

### YEARLY AVERAGE OF WATER AND AIR TEMPERATURES

